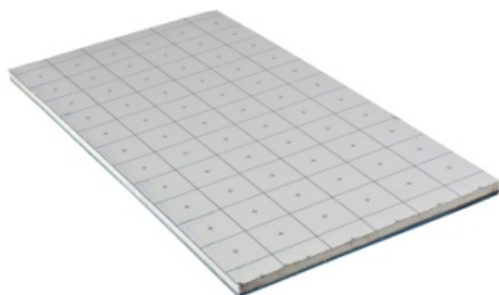


**SYSTEM N° 6
ACOUSTIC STILL 17
ELEMENTS DESCRIPTION**



SOUNDPROOFING LINE



SWELL KONFORME 27

is the result of a coupling of two panels, with so many different materials perfectly integrated together
- a layer of 20 mm. of **thermal insulation action** of polyurethane foam covered both sides by aluminum 5 treaded

- a layer of 7 mm. of **sound absorbing action** of a green special felt pads punched polyethylene chemically cross-linked and activated with plasticizer coupled to polyester fibers

R_D m² K/W 1,10; ΔL_W 24 dB (at 100 kg/m²) Medium dynamic rigidity 37 MN/m³

THERMAL RESISTANCE certificate ISTITUTO GIORDANO n. 290680

CYNAMIC RIGIDITY certificate ISTITUTO GIORDANO n. 290678

NOISE REDUCTION certificate ISTITUTO GIORDANO n. 290679

Sheet sizes mm 600 x 1200 x 27 (0,72 m²) pack. m² 10,8



SOUNDPROOFING LINE



CPL 25/5

cornice perimetrale acustica in pe, predisposta per posa a L con BANDELLA DI PE al fine di evitare infiltrazioni di calcestruzzo (causa di ponti acustici compromettenti la tenuta acustica)

Posa facilitata in quanto confezionata a rotoli; appoggiare i pannelli della serie *soundproofing line* sopra il piede (adesivo) della cornice perimetrale e spingerlo al massimo contro la schiena della stessa in modo tale da non lasciare fessure, poi coprire con la bandella di pe il pannello stesso a totale garanzia contro le infiltrazioni di malta cementizia, ed infine tagliare l'eccedenza solamente dopo aver posato e stuccato la pavimentazione, prima della posa del battiscopa.

h. bandella pe mm. 265; h. schiena mm. 175; h. piede adesivo mm. 75; lunghezza rotolo ml 50



TK 317

plastic clip for fixing pipe 17 to the extruded polystyrene board h. 3 cm in an automatic way by means of the special tool tacker FGT 48, following guide 5 treaded printed over heat-reflecting BDM 51. Box of 300 pcs.

**SYSTEM N° 6
ACOUSTIC STILL 17
ELEMENTS DESCRIPTION**



PE-Xa 17x2

crosslinked polyethylene pipe with peroxide method, equipped with oxygen barrier evoH. Raw material is high density polyethylene (HDPE) 951 kg/m³, this pipe has a lower degree of crystallization which makes the same more flexible than that of the competitors. The pipe is crosslinked immediately after the exit from the extrusion head by heating with an infrared radiation at high power and short wavelength with a degree >75%.

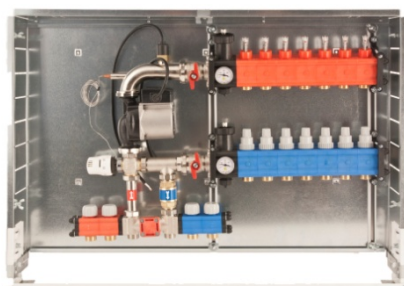
Certifications: IIP; CSTB; SKZ; IQNET; AENOR

DIN EN 12318-2 (former DIN 16892) compliant in accordance to ASTM F876 / F877.



PE-RT 17x2

polyethylene pipe with oxygen barrier evoH, this particular type of extrusion allows the high malleability of the pipe also in winter. Raw material is polyethylene with high thermal resistance with evoH oxygen barrier. According to DIN EN ISO 22391. IIP n° 261 / 2011 – Rev. 0 certifies that the product described complies with requirements indicated and IIP specified in the general regulations and special rules applicable and evaluated against the requirements document Sincert RT06



DUOFIX

control unit **only warm** at fixed point to be recessed in the wall for distribution both high and low temperatures; composed of that elements:

steel cabinet; polyamide manifold (reinforced with glass fiber) for low temperature, polyamide manifold (reinforced with glass fiber) for high temperature (2 ways for radiators) thermostat security TCS 47; three ways valve BUL 57 with thermostatic control TCB 34; double by pass valve; n. 2 thermometer TB 12; n. 2 automatic airvent; n. 2 filling valve+

**SYSTEM N° 6
ACOUSTIC STILL 17
ELEMENTS DESCRIPTION**



DUOKLIM OW

climate control unit to be recessed in the wall for distribution both high and low temperatures; composed of that elements:

steel cabinet; polyamide manifold (reinforced with glass fiber) for low temperature, polyamide manifold (reinforced with glass fiber) for high temperature (2 ways for radiators) thermostat security TCS 47; three ways valve BUL 57 with motorized actuator AXM 117 (230 V) TCB 34; double by pass valve; n. 2 thermometer TB 12; n. 2 automatic airvent; n. 2 filling valve; ; a 3 speed Pump Grundfos UPS 25/55 Low Energy;

Package including only warm separately delivered

- NRT 114 control unit (to be wall installed ; don't need thermostat because that has this function)
- EGT 301 external probe (to be installed in the outside wall of the house, possibly at north)
- EGT 354 flow sensor (to be installed inside cabinet of DUOKLIM OW)



CIM

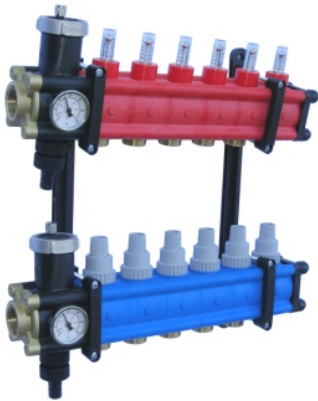
steel sheet cabinet for manifold with mobile guides . Adjustable in depth from 110 to 150 mm. Lock with screwdriver. Suitable for the containment of manifolds in the range. Available in widths of 40, 50, 60, 70, 85, 100, 120, 130



POLIEKO

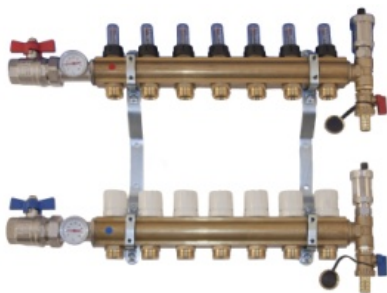
modular manifold 1" in polyamide reinforced with glass fiber, thermostatic valve on the return, with flow rate, with n. 2 thermometers, n. automatic 2 automatic airvent, n. 2 exhaust terminals, and n. 2 brackets.

**SYSTEM N° 6
ACOUSTIC STILL 17
ELEMENTS DESCRIPTION**



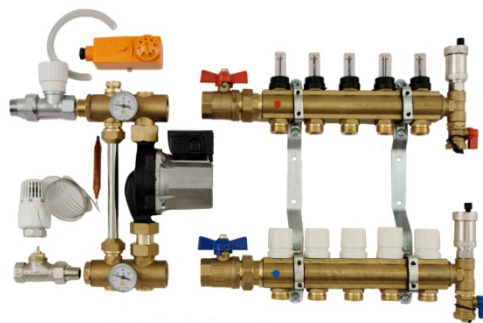
POLISWELL

modular manifold 1" ¼ in polyamide reinforced with glass fiber, thermostatic valve on the return, with flow rate, with n. 2 thermometers, n. automatic 2 automatic airvent, n. 2 exhaust terminals, and n. 2 brackets.



OTTOMATIC

brass manifold 1" thermostatic valve on the return, with flow rate, with n. 2 thermometers, n. automatic 2 automatic airvent, n. 2 exhaust terminals, and n. 2 brackets.



OTTOFIX MONO

UHM mixture system. This control center is designed for mixing the primary supply water with the under floor heating return water into a required temperature for under floor heating systems. Main components: thermostat security TCS 47; three ways valve BUL 57 with motorized actuator AXM 117 (230 V) TCB 34; double by pass valve; n. 2 thermometer TB 12; n. 2 automatic airvent; n. 2 filling valve; Pump Grundfos a 3 speed brand WILO
OTTOMATIC brass manifold 1" thermostatic valve on the return, with flow rate, with n. 2 thermometers, n. automatic 2 automatic airvent, n. 2 exhaust terminals, and n. 2 brackets.
CIM steel sheet cabinet for manifold with mobile guides . Adjustable in depth from 110 to 150 mm. Lock with screwdriver. Suitable for the containment of manifolds in the range. Available in widths of 40, 50, 60, 70, 85, 100, 120, 130

**SYSTEM N° 6
ACOUSTIC STILL 17
ELEMENTS DESCRIPTION**



APX

fittings for connection of polyethylene pipes (PE Xa or PE RT) to the manifolds of the range swell system



RM

fittings for connection of multilayer pipes (MRN) to the manifolds of the range swell system



TEP

actuator for electrical control of the manifold, 230 V, normally closed 2 or 4 wire, (with a limit switch for an additional electrical equipment like a boiler, a pump, or other.



TE 411

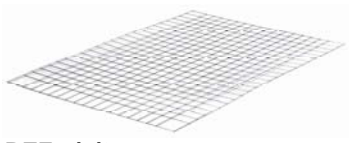
electronic room thermostat **WC** white with: big display graphic icons matched to the front buttons for choice of mode operation. Choice Celsius or Fahrenheit. Powered by 2 AA 1.5 V alkaline. Battery life more than 4 years, an indication of insufficient charging of batteries. Max temp 45°C Dimensions 135 x 83 x 21



CP 18

curve support at 90° in polyamide reinforced with glass fiber. No scratch pipe

**SYSTEM N° 6
ACOUSTIC STILL 17
ELEMENTS DESCRIPTION**



REZ 7/7/2

galvanized ribbed mesh. Decreases formation of cracks caused by temp differences and prevent the creation of projections in the floors. Measures mm. 2000 x 1000 mesh 70 x 70 x 2. Pack n. 20 sheets (m² 40). Wire is knurled for better gripping on the concrete slab



GDH 11

expansion joint in flexible foam of red polyethylene, with adhesive, length mm 2000, height mm. 116, thickness mm. 7, Required for areas larger than 40 m²



GC 19

corrugated sheath pre-cut in black polypropylene copolymer, provided with corrugation perpendicular to the longitudinal axis; good flexibility even at low temperatures. Pre cut in the longitudinal direction to allow the application on the pipe when is yet installed



LA 45

Liquid additive for concrete slab. Designed to reduce the mixing water, improves the fluidity of the concrete, promotes good workability without delaying the development of mechanical strengths. Recommended dosage: 1% by weight of cement powder

**SYSTEM N° 6
ACOUSTIC STILL 17
ELEMENTS DESCRIPTION**



SWC 30

protective liquid for underfloor radiant system. Balanced composition of corrosion inhibitors with anti scaling action, also generates a healing effect against lime deposits or biotic, and also to corrosion residues may be present in the plant. Also generate an algostatic effect. Compatible with all metals and plastic elastomers. Biodegradable. Dosage 1 kg every 200 litres of water in the system.