

**SYSTEM N° 12
ALU STAMEN 17
ELEMENTS DESCRIPTION**



STAMEN CORPUS 38

ecological panel for dry system; solution suitable for renovation, in fact, only 28 mm (38 with parquet prefinished boards) you can have a floor heating with good insulation and energy efficient as per DIN EN 1264 and 'a fiber panel of wood already coupled to a heat-reflecting aluminum plate in which they reside lanes "cross" for the tubes to step 15 in the grooves will rest the tube that will transmit the heat through the aluminum to the steel plates which have the double function of heating screed and load distribution height. 38 (21 under the pipe). Sizes 1200 x 600 (0.72 m). Pack. 8.64 m²



STAMEN CAPUT 38

head to be matched to the body of the panel that allows the curvature of the pipes, by resting in the peripheral edges is a panel made of wood fiber already coupled to a heat-reflecting film aluminized.

Format 600 x 300 (0.18 square meters) Suitable for tube 17x2; mm pitch. 150/75; mm heights. 28 (11 under the pipe)



CPA BIO 14/5

cornice perimetrale biologica di altezza pari a circa 14 cm composta da fibre vegetali di Kenaf, intrecciate e compattate con procedimento meccanico di agugliatura senza l'aggiunta di additivi chimici. Il prodotto è accoppiato superiormente ad un film in polietilene con funzione protettiva nei confronti delle sottostanti fibre vegetali. Il Kenaf è una pianta appartenente alla famiglia delle malvacee e derivante da coltivazioni che non richiedono l'uso di pesticidi ed erbicidi. Gli scarti del processo di estrazione della fibra sono riutilizzati come foraggio e come combustibili ecologici. Da posizionare con il film trasparente a vista



BDM BIO 24

roll of paper treated to obtain the maximum water repellent, to be used as a barrier to moisture rising from the subsoil. 0.2 mm thick. Height mt.1 roll Roll Size 100 m2. Roll weight kg. 80

**SYSTEM N° 12
ALU STAMEN 17
ELEMENTS DESCRIPTION**



FLN

heating load distribution plate, galvanized rounded 1mm. function of substrate heating and load distribution. FLT 50 rests directly on top of the tube (housed in the heat conducting strip series LT), in such a way as to form a flat layer, after it proceeds by removing the film FLT 50B which will go to attach to FLT 50 creating a single body extremely resistant to mechanical stress (to be applied on top and offset). Then you can apply any coating, ceramic flooring etc.. The plate has rounded corners to prevent accidental breakage of the pipe during laying
On average, predict a 60% measuring 50x50 and 25x50 40%. Height mm. 0.8



PE-Xa 17x2

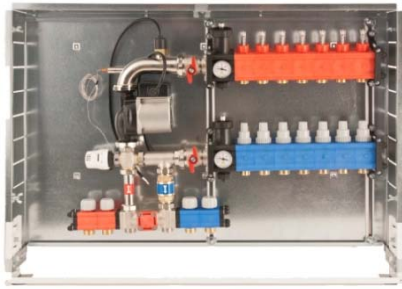
crosslinked polyethylene pipe with peroxide method, equipped with oxygen barrier evoH. Raw material is high density polyethylene (HDPE) 951 kg/m³, this pipe has a lower degree of crystallization which makes the same more flexible than that of the competitors. The pipe is crosslinked immediately after the exit from the extrusion head by heating with an infrared radiation at high power and short wavelength with a degree >75%.
Certifications: IIP; CSTB; SKZ; IQNET; AENOR
DIN EN 12318-2 (former DIN 16892) compliant in accordance to ASTM F876 / F877.



PE-RT 17x2

polyethylene pipe with oxygen barrier evoH, this particular type of extrusion allows the high malleability of the pipe also in winter. Raw material is polyethylene with high thermal resistance with evoH oxygen barrier. According to DIN EN ISO 22391. IIP n° 261 / 2011 – Rev. 0 certifies that the product described complies with requirements indicated and IIP specified in the general regulations and special rules applicable and evaluated against the requirements document Sincert RT06

**SYSTEM N° 12
ALU STAMEN 17
ELEMENTS DESCRIPTION**



DUOFIX

control unit **only warm** at fixed point to be recessed in the wall for distribution both high and low temperatures; composed of that elements:
steel cabinet; polyamide manifold (reinforced with glass fiber) for low temperature, polyamide manifold (reinforced with glass fiber) for high temperature (2 ways for radiators) thermostat security TCS 47; three ways valve BUL 57 with thermostatic control TCB 34; double by pass valve; n. 2 thermometer TB 12; n. 2 automatic airvent; n. 2 filling valve-



DUOKLIM OW

climate control unit to be recessed in the wall for distribution both high and low temperatures; composed of that elements:
steel cabinet; polyamide manifold (reinforced with glass fiber) for low temperature, polyamide manifold (reinforced with glass fiber) for high temperature (2 ways for radiators) thermostat security TCS 47; three ways valve BUL 57 with motorized actuator AXM 117 (230 V) TCB 34; double by pass valve; n. 2 thermometer TB 12; n. 2 automatic airvent; n. 2 filling valve; ; a 3 speed Pump Grundfos UPS 25/55 Low Energy;

Package including only warm separately delivered

- NRT 114 control unit (to be wall installed ; don't need thermostat because that has this function)
- EGT 301 external probe (to be installed in the outside wall of the house, possibly at north)
- EGT 354 flow sensor (to be installed inside cabinet of DUOKLIM OW)



CIM

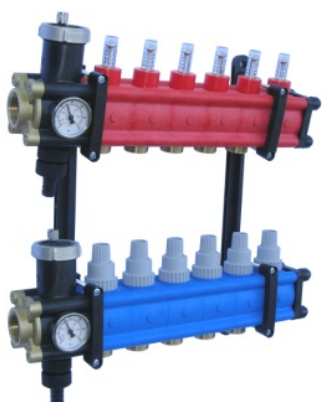
steel sheet cabinet for manifold with mobile guides . Adjustable in depth from 110 to 150 mm. Lock with screwdriver. Suitable for the containment of manifolds in the range. Available in widths of 40, 50, 60, 70, 85, 100, 120, 130

**SYSTEM N° 12
ALU STAMEN 17
ELEMENTS DESCRIPTION**



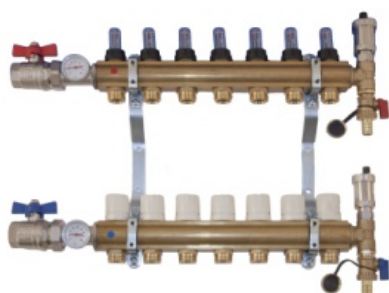
POLIEKO

modular manifold 1" in polyamide reinforced with glass fiber, thermostatic valve on the return, with flow rate, with n. 2 thermometers, n. automatic 2 automatic airvent, n. 2 exhaust terminals, and n. 2 brackets.



POLISWELL

modular manifold 1" ¼ in polyamide reinforced with glass fiber, thermostatic valve on the return, with flow rate, with n. 2 thermometers, n. automatic 2 automatic airvent, n. 2 exhaust terminals, and n. 2 brackets.



OTTOMATIC

brass manifold 1" thermostatic valve on the return, with flow rate, with n. 2 thermometers, n. automatic 2 automatic airvent, n. 2 exhaust terminals, and n. 2 brackets.

**SYSTEM N° 12
ALU STAMEN 17
ELEMENTS DESCRIPTION**



OTTOFIX MONO

UHM mixture system. This control center is designed for mixing the primary supply water with the under floor heating return water into a required temperature for under floor heating systems. Main components: thermostat security TCS 47; three ways valve BUL 57 with motorized actuator AXM 117 (230 V) TCB 34; double by pass valve; n, 2 thermometer TB 12; n. 2 automatic airvent; n. 2 filling valve; Pump Grundfos a 3 speed brand WILO
OTTOMATIC brass manifold 1" thermostatic valve on the return, with flow rate, with n. 2 thermometers, n. automatic 2 automatic airvent, n. 2 exhaust terminals, and n. 2 brackets.
CIM steel sheet cabinet for manifold with mobile guides . Adjustable in depth from 110 to 150 mm. Lock with screwdriver. Suitable for the containment of manifolds in the range. Available in widths of 40, 50, 60, 70, 85, 100, 120, 130



APX

fittings for connection of polyethylene pipes (PE Xa or PE RT) to the manifolds of the range swell system



RM

fittings for connection of multilayer pipes (MRN) to the manifolds of the range swell system



TEP

actuator for electrical control of the manifold, 230 V, normally closed 2 or 4 wire, (with a limit switch for an additional electrical equipment like a boiler, a pump, or other.



TE 411

electronic room thermostat WC white with: big display graphic icons matched to the front buttons for choice of mode operation. Choice Celsius or Fahrenheit. Powered by 2 AA 1.5 V alkaline. Battery life more than 4 years, an indication of insufficient charging of batteries. Max temp 45°C Dimensions 135 x 83 x 21

**SYSTEM N° 12
ALU STAMEN 17
ELEMENTS DESCRIPTION**



CP 18

curve support at 90° in polyamide reinforced with glass fiber. No scratch pipe



REZ 7/7/2

galvanized ribbed mesh. Decreases formation of cracks caused by temp differences and prevent the creation of projections in the floors. Measures mm. 2000 x 1000 mesh 70 x 70 x 2. Pack n. 20 sheets (m² 40). Wire is knurled for better gripping on the concrete slab



LA 45

Liquid additive for concrete slab. Designed to reduce the mixing water, improves the fluidity of the concrete, promotes good workability without delaying the development of mechanical strengths. Recommended dosage: 1% by weight of cement powder



SWC 30

protective liquid for underfloor radiant system. Balanced composition of corrosion inhibitors with anti scaling action, also generates a healing effect against lime deposits or biotic, and also to corrosion residues may be present in the plant. Also generate an algostatic effect. Compatible with all metals and plastic elastomers. Biodegradable. Dosage 1 kg every 200 litres of water in the system.